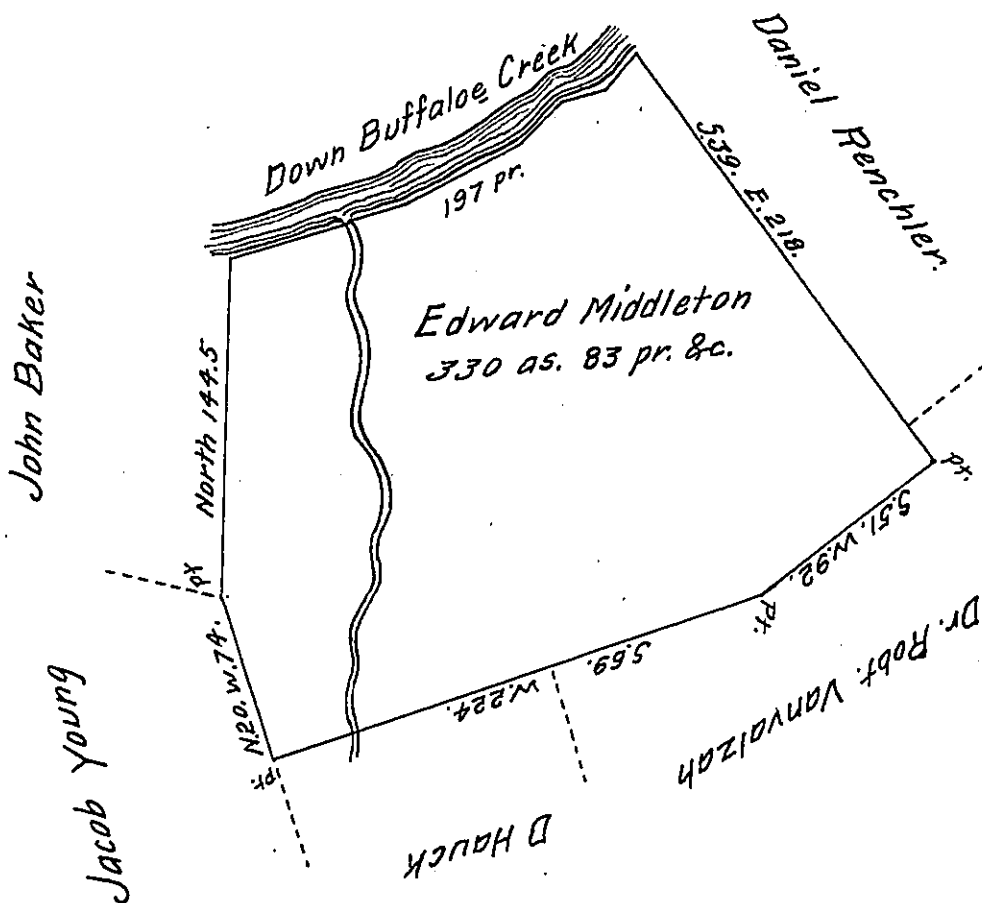


Cor. & Dist.
down creek

N. 70. E. 76.
N. 60. E. 58.
N. 93. E. 24.
N. 76. E. 18.
N. 39. E. 21.
137



Situate in Buffaloe township Union [late Berks] County, surveyed the 6th day of November 1832 by virtue of an order granted to Edward Middleton dated the 30. day of April 1769, No. 1518. Containing three hundred and thirty acres with the usual allowance &c.

Note. The same tract of land was surveyed the 5th day of August 1769. for Henry Seess in pursuance of his order of survey dated the 30. day of April 1769. No. 341. And now owned and occupied by John Bechtel in right of the said Henry Sees.

To Jacob Spangler Esqr. pr Jno. Hayes Con.
Surveyor General Penna.

The following office rights are for same land as above, on Appl. No. 2770, to Henry Pickle.

- - 2221, to William Mitchel.

IN TESTIMONY that the above is a copy of the original remaining on file in the Department of Internal Affairs of Pennsylvania, made conformably to an Act of Assembly approved the 16th day of February, 1833, I have hereunto set my Hand and caused the Seal of said Department to be affixed at Harrisburg, this eighth day of August 1908.

Henry Horvath
Secretary of Internal Affairs.